

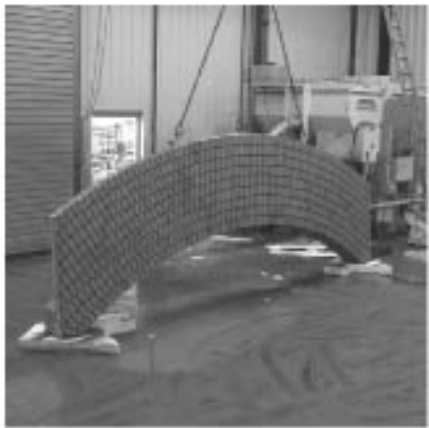


Aldgate Triangle, Commercial Rd, E1

Case Study



Each brick header is dovetailed. A grid is laid out on the base of the mould to ensure accurate spacing of the bricks.



Each arch is carefully cleaned and inspected having been removed from the mould.



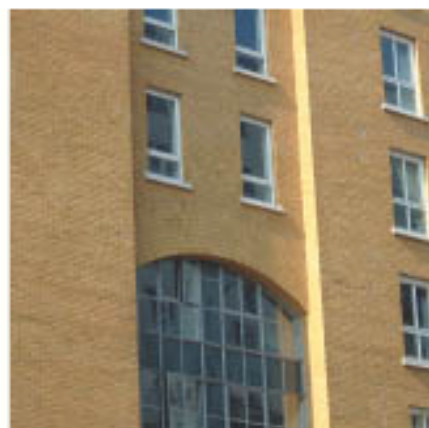
The use of computer generated moulds allows fast accurate manufacture of one-off precast elements.



The segmental arch was designed as boot lintel to enable a 327mm faced soffit but keep the overall weight to a minimum.



Delivery of the unit to site is programmed so that it can be installed without the need for site storage. Lifting loops and test certificates are supplied to all projects



The segmental arch is designed to span the full 6500mm as a precast beam to support the brickwork above.

**Project:**  
Aldgate Triangle  
Commercial Road, E1.

**Contractor:**  
Ballymore Properties Ltd

**Architect:**  
C.Z.W.G Architects

**Product:**  
Precast Arches.

This 10 storey residential development incorporates two large arch details.

Firstly a large semi-circular feature manufactured in four identical sections and detailed to be installed as cladding panels to keep the weight and size of the units transportable. Each unit was secured back to the building's concrete frame using stainless steel cleats.

Secondly, a segmental arch with a structural span of 6500mm was manufactured as a precast beam designed to support the brickwork above.

