

Northfleet



Kent Police HQ,

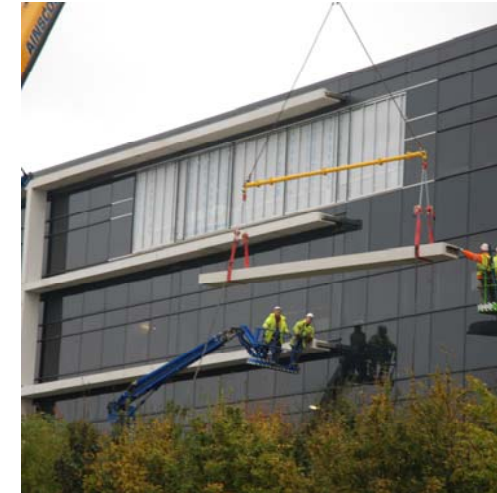
Case Study



Steel frame detailed with fixing plates to provide lateral restraint to cladding panels.



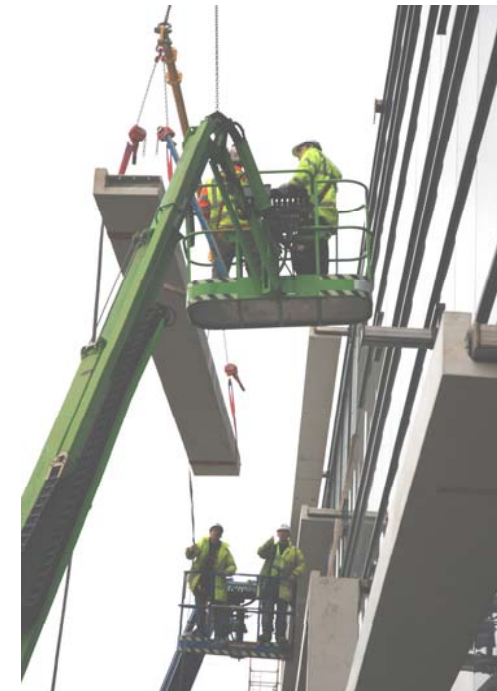
Typical cladding panels were 9 metres long and up to 4 metres high.



Installation of 9 metre fins erected once glass curtain wall had been completed.



Projecting stainless steel bearers protrude through the curtain wall and are secret fixed in pockets at the end of units.



Units were installed within 100mm of the curtain walling.



Intermediate mullions at 27 metre centres support the ends of adjacent fins.

Project:
North Kent Police HQ
(PFI)

Contractor:
Kier Construction

Engineer:
AKS Ward

Architect:
Glenn HowellsArchitects
McBains Cooper

Product:
Spanish White dolomite
cladding panels to
custody suite.
Fin and Column
framework to 4 storey
administration block.

