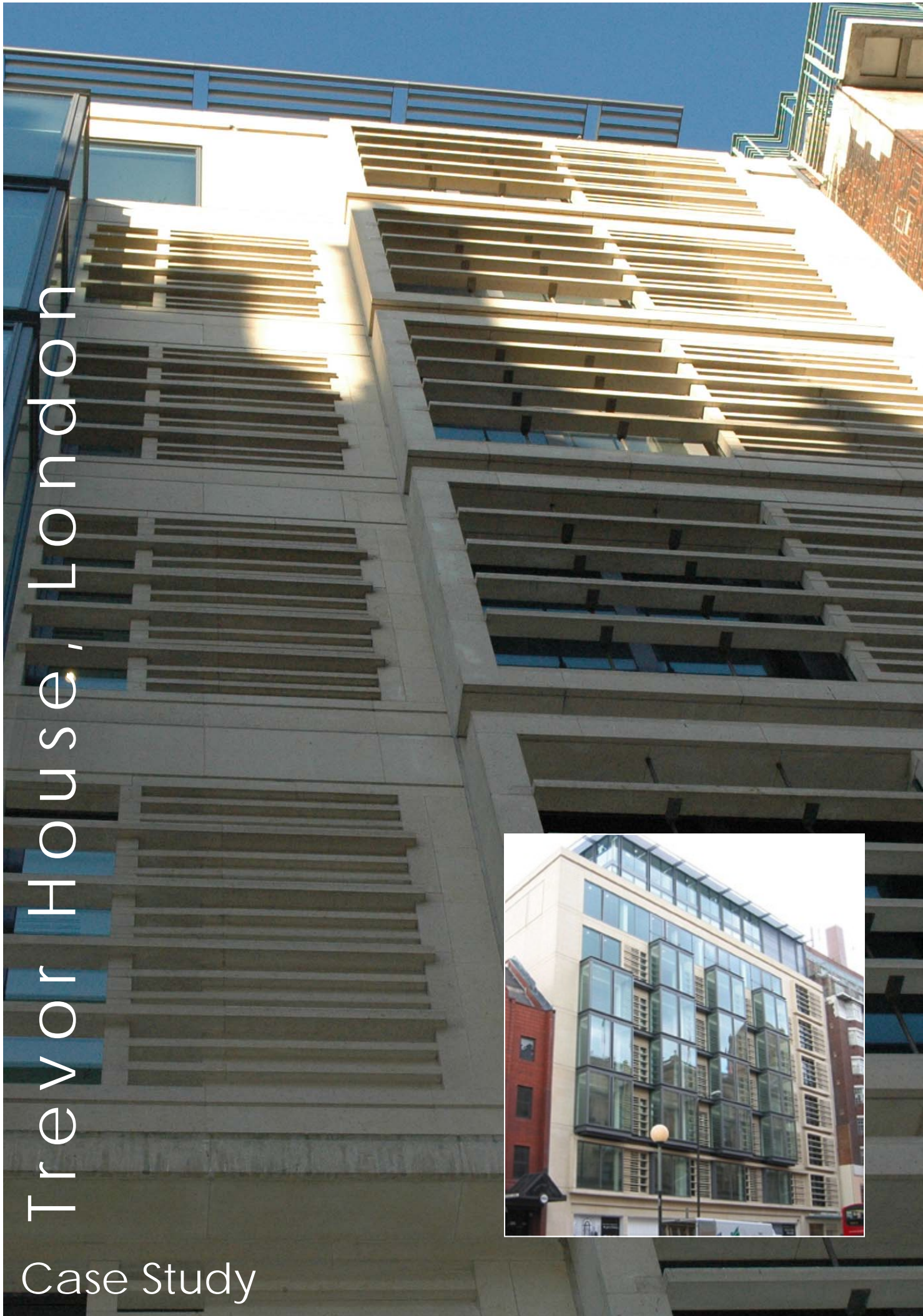


Trevor House, London

Case Study



This is some text



This is some text



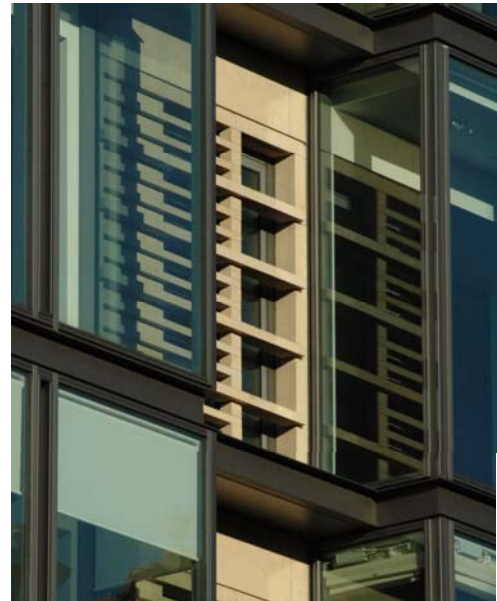
This is some text



This is some text



This is some text



This is some text

**Project:**  
Trevor House,  
Knightsbridge, London

**Contractor:**  
Mowlem Construction

**Engineer:**  
Erskine Hurt  
Consultants Limited

**Architect:**  
Hamilton Associates

**Product:**  
Natural Stonefaced  
Louvre Cladding Panels

This is some text

